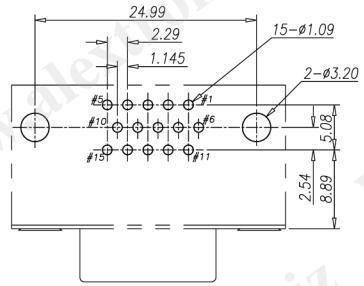
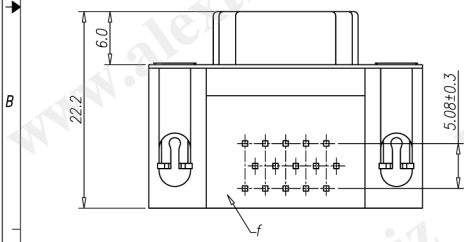
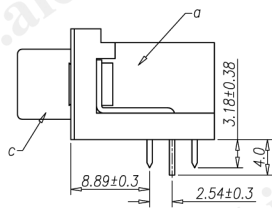
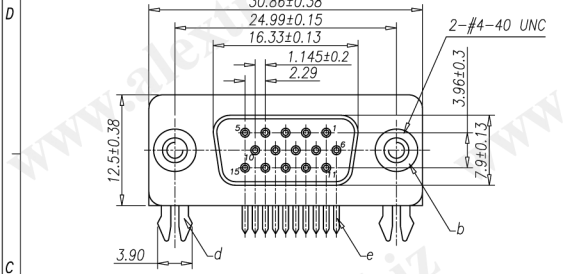


CATEGORY	DESCRIPTION	P/N #
CONNECTOR	D-SUB 15Pin Female, 8.89, R/A, T/H	DB815F-11XX0-XXXX

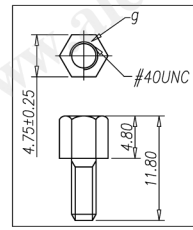
REV.	ECN NO	DESCRIPTION	REVISED	DATE
A01		New Release	GMC	2009.11.20

**SPECIFICATIONS**

- CONTACT CURRENT RATING:3 Amperes.
- DIELECTRIC WITHSTANDING VOLTAGE:AC 1000/60sec.r.m.s.
- INSULATION RESISTANCE:5000 Mohms MIN.AT DC 500V.
- CONTACT RESISTANCE:25 Milliohms MAX.
- TEMPERATURE:-55°C TO +105°C.
- GROUNDING SCREW TORQUE:3Kg MIN.
- SOLDER HEAT RESISTANCE:WAVE SOLDERING 260° 10sec.
- TO CONFORM TO THE "SoNY" DIRECTIVE.
- GREEN PRODUCT IDENTIFICATION LABEL IN PACKING: **G.P. PASS**



Recommend PCB Layout  
(Jack Top View)  
Tolerance: ±0.05mm  
Recommend PCB Thickness: 1.6mm



PART NO.:  
DB815F-11XX0-XXXX

XX	Screw Type
01	無螺絲
02	附螺絲
03	鍍螺絲

See Color Scheme

X	Shell Plating
1	Ni Plating

Housing & Cover Material

X	Housing	Cover
1	PBT UL94V-0	PBT UL94V-0
6	PA6T UL94V-0	PA6T UL94V-0

Color Scheme

XX	Housing	Cover
00	Black	Black
01	Blue	Blue

g	Screw	2	Brass	Ni Plating	
f	Cover	1	See Table 1	See Color Scheme	
e	Terminal	15	Brass	Gold Flash Plating	
d	Board Lock	2	Brass, T=0.6mm	Tin Plating	
c	Shell	1	SPCC, T=0.4mm	Ni Plating	
b	Rivet	2	Brass	Ni Plating	
a	Housing	1	See Table 1	See Color Scheme	
NO.	PART NAME	Q'TY	MATERIAL	PLATING & COLOR	Remark

UNLESS OTHERWISE SPECIFIED TOLERANCES

DECIMALS:	ANGLES:
X : ±0.5	X : ±2°
X.X : ±0.3	X.X : ±1°
X.XX : ±0.2	

Product Drawing ALEXTRONIC			
SCALE: 1/1	UNIT: mm	DWG. NO:	
SIZE: A3	PAGE: 1 OF 1	REV: A01	WI-061-763
APPROVED BY	CHECKED BY	PREPARED BY	
WYX	Pengjie	GMC	
<b>CUSTOMER COPY</b>			